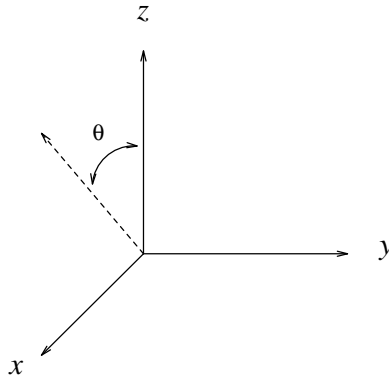


Terminology for Projections



The projection of the needle on the vertical axis is called m_z .

The projection of the needle on the horizontal axis is called m_x .

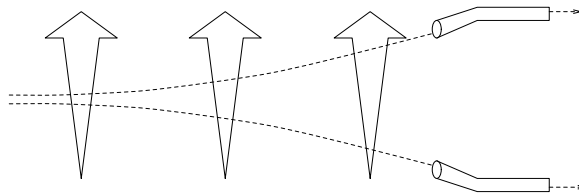
The projection of the needle on an axis tilted at an angle θ to the vertical axis is called m_θ .

Using this terminology, we have $m_0 = m_z$, $m_{90} = m_x$, and $m_{180} = m_{-z}$.

Stern-Gerlach Analyzers

The Stern-Gerlach apparatus, packaged in a box, is called a **Stern-Gerlach Analyzer**.

Raw Apparatus:



Analyzer:

